

Integrating Photographs Into Family History

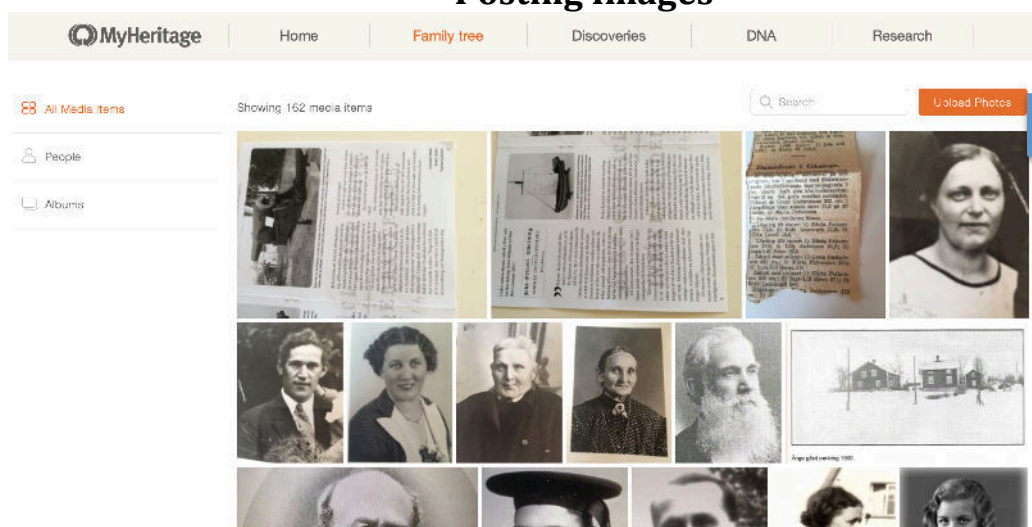
Maureen Taylor, The Photo Detective

<https://maurentaylor.com>

What you can do with MyHeritage.com

- Post images to your family page
- Collaborate on photo identification with cousins
- Tag images and add descriptions
- Take advantage of Instant Discoveries

Posting Images

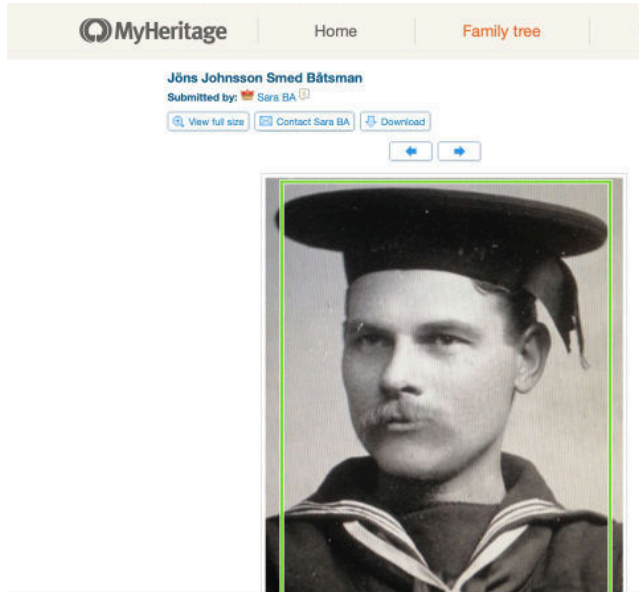


- Photos must be uploaded to an album

Where are Your Photos?

- You can access them from the homepage
- They can be found under the Family Tree drop down menu

Photo Details



*File name

*Submitted by

*View Full Size

*Download

File Names

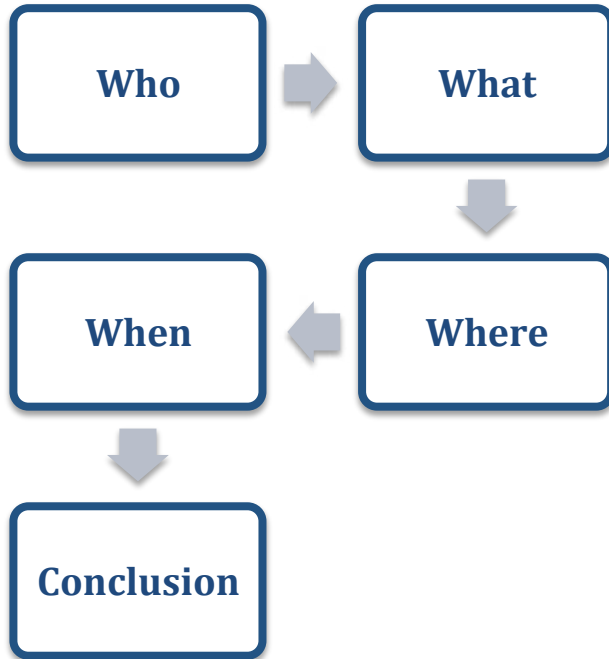
Keep them simple

Last name_first name_year of birth

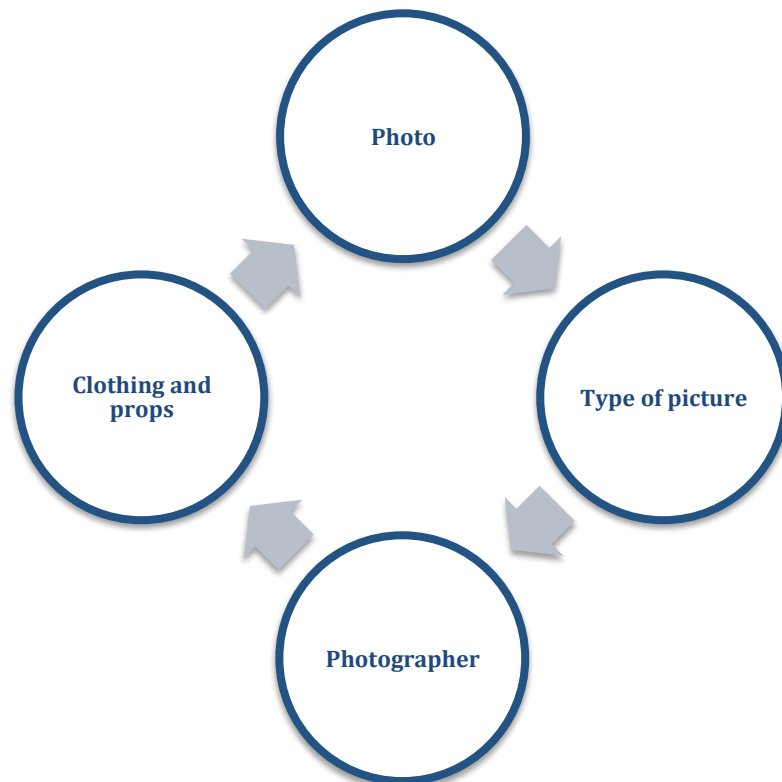
- While you can edit the caption above the image, make note of the original file name in the Notes section for the photograph.

Photo Identification Basics

The Five Questions:



You can add these details to each photo



Who Owned It?_Provenance

- Who owned this picture before you (and before them)?
- Why is this picture in your collection?
- Who do you think the people are?
- Are there stories associated with the image?
- How did it end up in your collection?

What Type of Photo Is It? Identify the Photographic Method

Daguerreotype	Ambrotype	Tintypes	Carte des Visite
Mirror-like surface	Negative on glass; appears as a positive image	Negative on iron; appears as a positive image	Albumen or carbon prints—photo chemicals on paper
Must be held at an angle to be seen	Backed with a dark background	Fixed on a black metal background	Mounted on thin card stock
Usually cased	Usually cased	Paper mat or case	Occasionally found in a case
Image is reversed*	Not reversed*	Image is reversed*	Not reversed
1839	1852	1856	Circa 1859

Types of Twentieth Century Images

Paper Prints

Kodak introduced its black-and-white roll film 1012 in 1895 and didn't discontinue it until 1956. Color negative film was introduced in 1941.

Postcards



collection of MaureenTaylor.com

Real photo” postcards produced from film or glass plate negatives with postcard-style backs, appeared around 1900 and remained available for decades.

Who Took the Picture? Research The Photographer

Photographers placed imprints in different places, depending on the type of image. Since the majority of photographs are paper prints, look on the front of the cardboard mount, the back of the image or their name embossed in the lower right corner of some images. Imprints include the photographer’s surname and sometimes where they operated their business. Try these resources for additional help researching photographers.

- Search the photographer’s name on Google.com to discover collections of their images and new information.
- Use newspaper databases such as GenealogyBank.com to track them through articles and advertisements
- Use city directories to establish work dates.

What Are They Wearing? Clothing Clues and Props

Clothing clues can determine a timeframe for an image or identify a person’s occupation or religion. Examine collars, cuffs, lapels and coat styles for men. Women’s fashions changed frequently so look for changes in bodice design, skirt length and width, and the styles of collars and sleeves.

- For twentieth century fashion consult the Historic Sears Catalog on <https://www.Ancestry.com>.
- Joan Severa’s *Dressed for the Photographer* (Kent State University Press, 1995) is still relevant today.

Photo Identification Class with Maureen Taylor

- A 9 lesson course including :photo format, researching photographers, fashion details, and analysis
- Available on <https://MaureenTaylor.com>

Need Help with Photo Identification?

- Maureen offers private consultations through her website <https://maurentaylor.com/store/photo-consultation/>

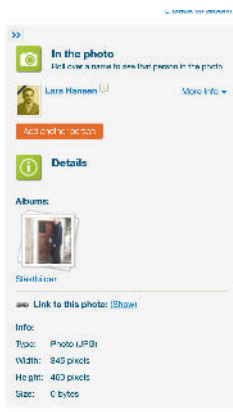
Instant Discoveries with MyHeritage

- Used to be called Smart Matches
- MyHeritage finds the matches for you
 - Up to 10 images on the screen
 - Verify, accept, or reject images
 - Available to Premium Plus or complete subscribers only.

Tagging

- Tag individuals.
- Great for group portraits. Makes it easy to see who's who.
- Fill in as many details as possible
- Complete the caption
- Others will see this information
- Collaboration is possible.

Other Information About the Photo



- Tagged person
- Details
- Albums that the same person appears in
- A direct link to the image URL
- Photo size

Collaboration

- Once you've added new tags (and information?) those tags will be added to the image and shared with the original person

- Use the comment field to ask a question.
- That is shared with everyone who is a member of your family tree.
- They'll get an email notification. No need to check the site.
- Contact the original submitter in the Instant Discoveries section before you accept the image.

Dealing with Unidentified Faces.

- Mark them as unknown (and a number)
- Use comments to ask your online family network a question

Learn more about photo identification at <https://maurentaylor.com>

Copyright 2019 Maureen Taylor