

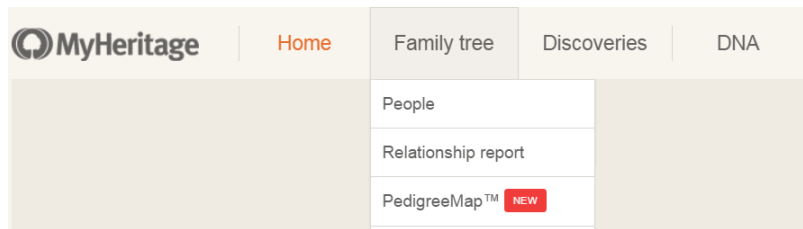
# PedigreeMap - an Interactive Map of Your Family History

By: Daniel Horowitz - [Daniel@MyHeritage.com](mailto:Daniel@MyHeritage.com) - Tweeter: [@MyHChiefGen](https://twitter.com/MyHChiefGen)

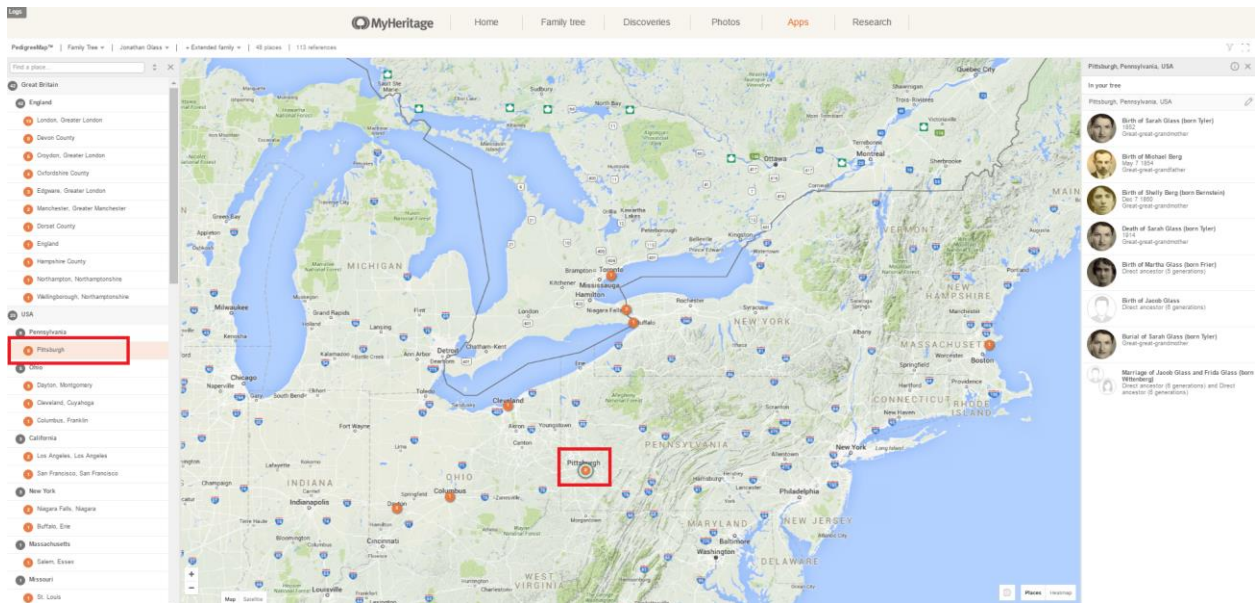
Have you ever wondered how close your ancestors lived to one another? Where exactly your great-grandmother was born? Seeing significant events from your family's past on a map allows you to gain a clearer picture of your family's journey.

PedigreeMap displays all your photos and events grouped by country and location, allowing you to easily filter the map to view it by person, family group, event type, and time period. If you have a tablet device, such as an iPad or an Android tablet, PedigreeMap will look awesome on it. You will be able to pan and zoom with your fingers, and enjoy the maps tremendously.

PedigreeMap is free for all users. To access it, log on to your MyHeritage family site and select PedigreeMap in the Family tree menu.

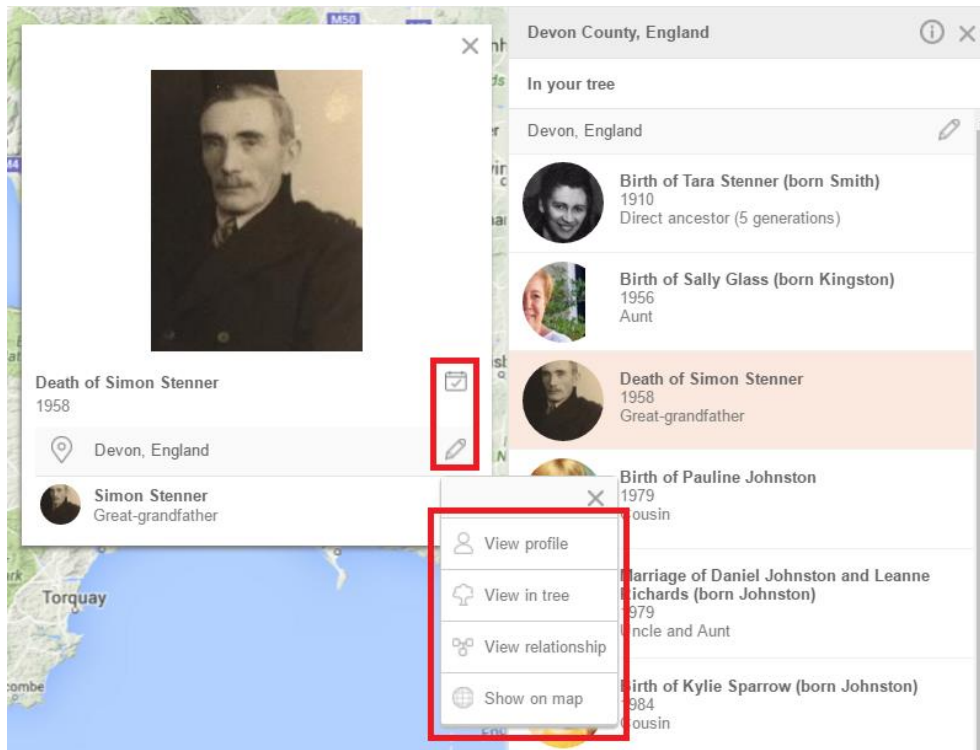


PedigreeMap displays every place name referenced in your family tree or your photos on the map. The main screen shows the embedded map. On the left-hand side, there is a list of all places that appear in your family tree. The numbers on the list correspond to the number of references to each place in your family tree. The map shows pins for each location.



Use the mouse to pan the map, dragging it in all directions. You can zoom in or zoom out using the small plus and minus controls in the bottom left-hand corner.

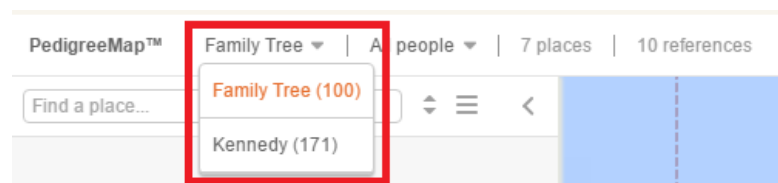
Click on any place name in the list on the left in order to bring that place into view on the map. Whenever you click a location from the left-hand panel or on a pin in the map, MyHeritage will display all the events and photos that happened in that place in the right-hand panel. Click on any of the items in the right-hand panel to zoom in and to see them in greater detail. This will reveal all the people involved in the event.



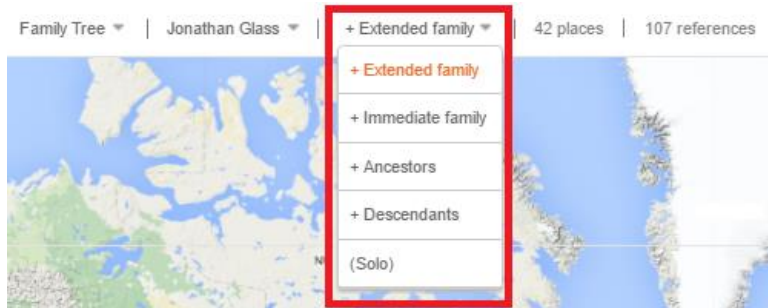
Click the calendar icon to edit an event, or the pencil icon to edit the place name. Use the drop down menu for each individual listed to view their profile, view them in the family tree, view their relationship, or to show all references to them on the map.

## Filtering options

If you have more than one family tree on your family site, you can switch quickly between your family trees using the drop down menu.



PedigreeMap can display events and photos for all people in the family tree, or a subset pertaining to a particular individual or subset of individuals. Start typing in a person's name, and you will receive suggestions immediately. You can then select a specific individual from the drop-down list.



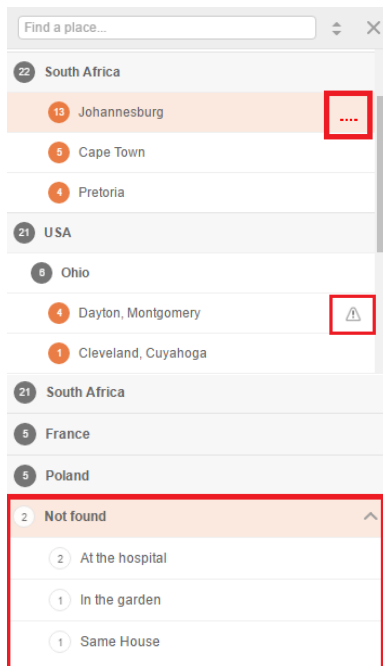
After selecting an individual from the family tree, use the proximity drop-down box on the right to show places for his or her extended family, immediate family, ancestors, descendants, or only for that person.

Click the funnel icon on the top right for more filtering options. Choose to see births, deaths, photos, other, or any combination. Move the year slider to show places that are referenced within a certain range of years. Move the generations slider to show places that are referenced within a range of certain generations in your family tree. Click the full-screen icon to view PedigreeMap in full screen.



## Place name standardization

One of the most useful features in PedigreeMap is the ability to “Find and Replace” place names for standardization and to improve the data quality in your family tree. If you have spelled a place name incorrectly or inconsistently throughout your tree, you can easily change these in PedigreeMap and this change will be reflected on that individual’s family tree profile.



PedigreeMap indicates places where you didn’t use standard canonicalized place names — i.e. places that mention a city without the country name. It will detect spelling errors in place names, and suggest fixes. A small red dotted line next to a place name in the list indicates that there are further suggestions for change.

Clicking on a place name with a suggestion will show all events that happened there, and the errors or missing information can be edited on the spot.

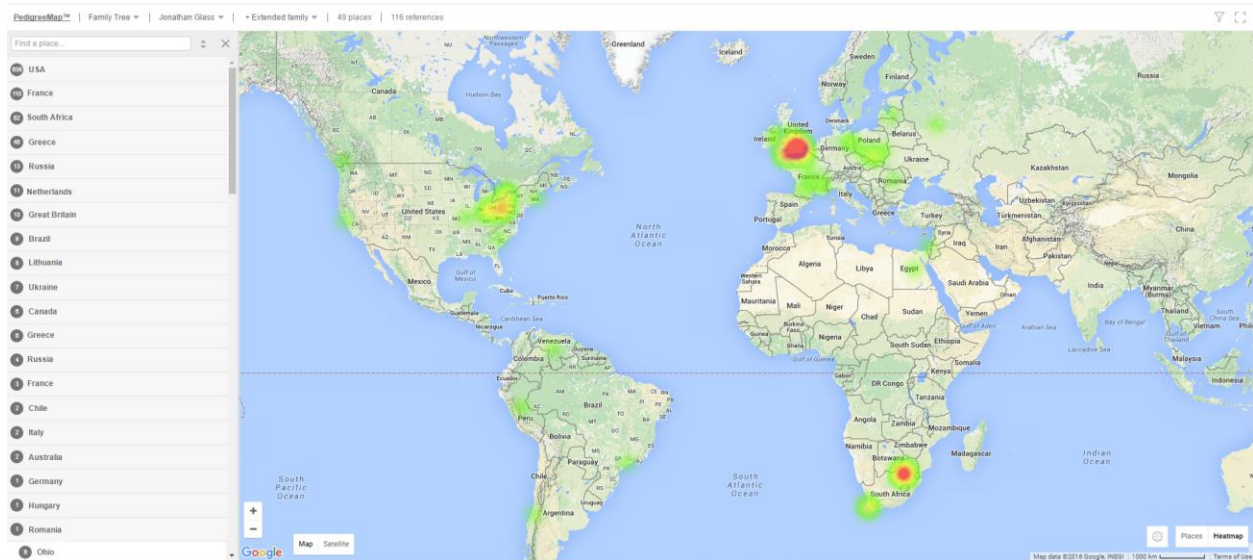
Place names in the left-hand column that are ambiguous are listed with a gray exclamation mark next to them.

Places that could not be located on the map are grouped at the bottom of the list on the left-hand side, and can be edited directly from PedigreeMap.

## Heatmap

Selecting the Heatmap visualization gives you a high-level view of your family history, showcasing which geographic areas have a higher concentration of references from your family tree. Access the Heatmap by clicking the Heatmap button on the bottom right-hand side of the map.

It is especially useful when combined with filtering by year and type. For example, selecting different year ranges and viewing the Heatmap for each selection will highlight the migration of your family over the years.



We invite you to try out PedigreeMap and get a new view of your family history.